



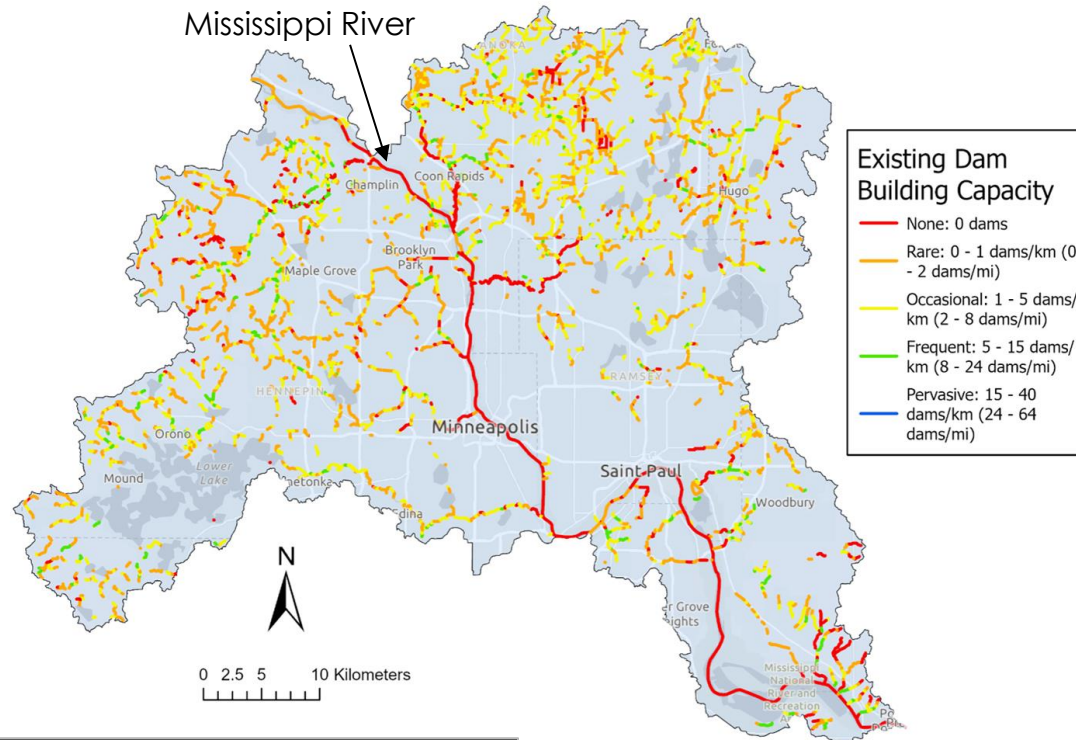
Incorporating human-beaver conflict potential into urban beaver restoration models

Martha Denton, University of Minnesota, Fairfax Beaver Lab

Beavers in Minneapolis, USA



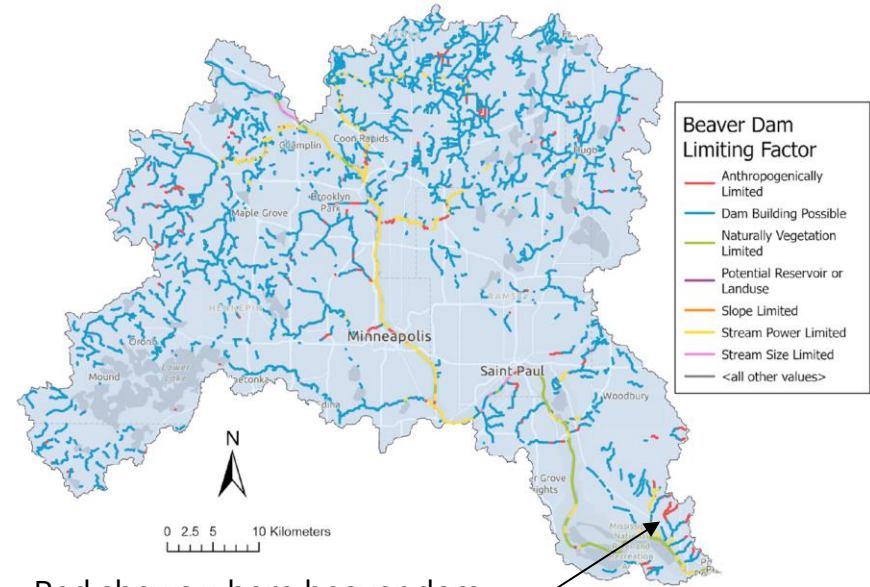
Existing Beaver Dam Building Capacity: Mississippi River-Twin Cities Watershed



Refining the BRAT Model

- The BRAT model assumes that beavers in urban areas will come into conflict with humans
- However, human-beaver conflict in Minneapolis is nuanced
- We updated land use classifications to more closely reflect human-beaver conflict in Minneapolis

Conservation Restoration Model: Optimistic Assumption of Human-Beaver Coexistence



Red shows where beaver dam building is limited by humans

Satellite Data Can't Sense Community Attitudes Toward Beavers!

Hiawatha Links

Concept A



Key Features

Concept A provides a vision for the Hiawatha Links, creating a natural area for recreation and education. The plan includes a variety of features that will enhance the park's value to the community and provide a natural area for recreation and education.

The plan includes a variety of features that will enhance the park's value to the community and provide a natural area for recreation and education.

The plan includes a variety of features that will enhance the park's value to the community and provide a natural area for recreation and education.

The plan includes a variety of features that will enhance the park's value to the community and provide a natural area for recreation and education.

The plan includes a variety of features that will enhance the park's value to the community and provide a natural area for recreation and education.

The plan includes a variety of features that will enhance the park's value to the community and provide a natural area for recreation and education.

The plan includes a variety of features that will enhance the park's value to the community and provide a natural area for recreation and education.

The plan includes a variety of features that will enhance the park's value to the community and provide a natural area for recreation and education.

The plan includes a variety of features that will enhance the park's value to the community and provide a natural area for recreation and education.

The plan includes a variety of features that will enhance the park's value to the community and provide a natural area for recreation and education.

The plan includes a variety of features that will enhance the park's value to the community and provide a natural area for recreation and education.



Photos: Sean Connaughty

Acknowledgements

- Advisor: Dr. Emily Fairfax
- BRAT support: Dr. Jessie Moravek
- Field work help: Jessie Moravek, Ari Lawrence, Jonah Docter-Loeb, Alyssa Connaughton

Contact Me: dento026@umn.edu

