

How do wolves and humans shape beaver spatial behaviour and ecosystem impacts?

Tom A. Diserens, Marcin Brzeziński, Marcin Churski, Andrzej Zalewski, Dries P.J. Kuijper



Mammal Research Institute
Polish Academy of Sciences
Białowieża

Study area: Białowieża Primeval Forest

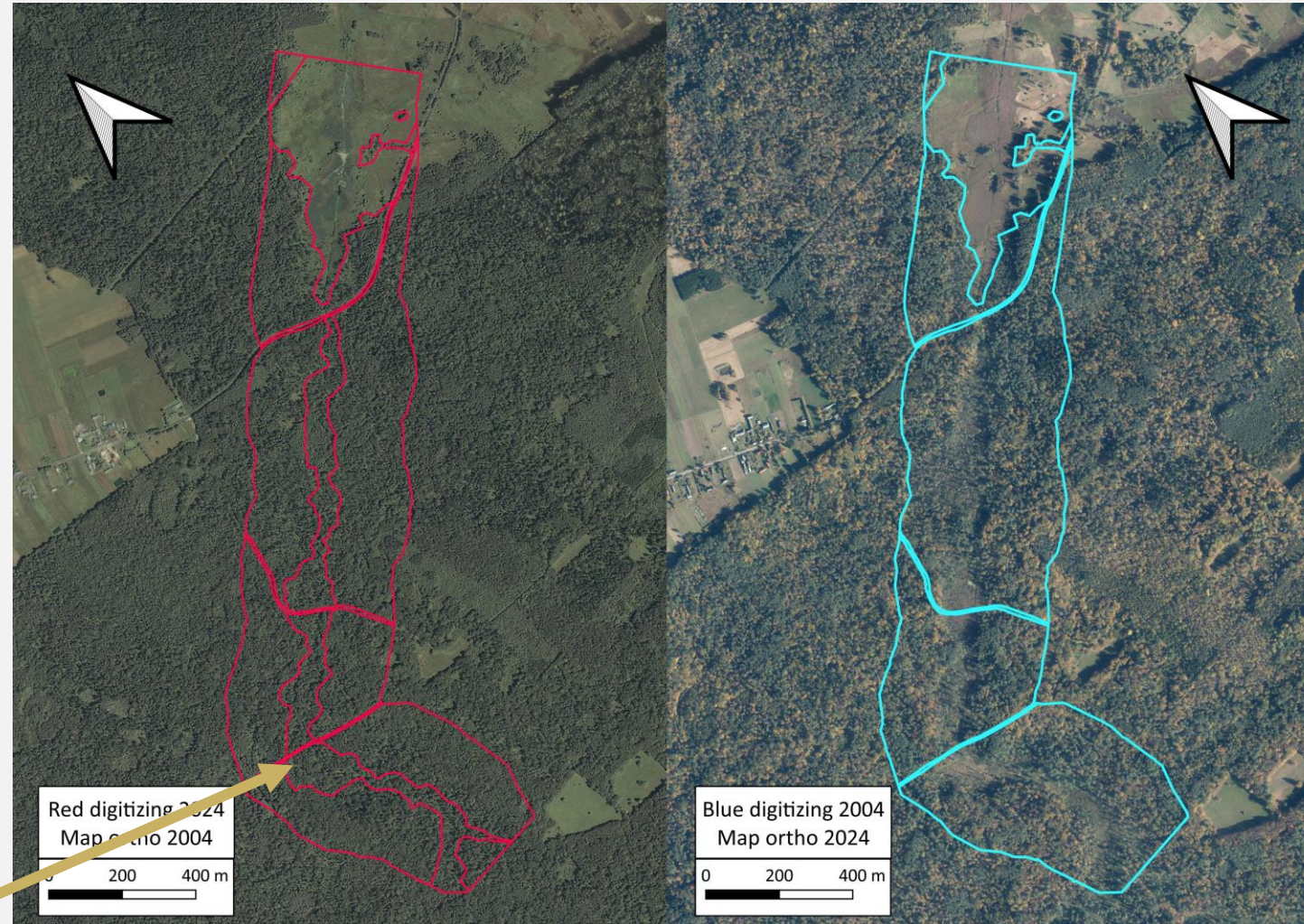
Inverness, 17th September 2025

Grant nr: 2024/52/C/NZ8/00332



NATIONAL SCIENCE CENTRE
POLAND

Aim 1: Assess nr hectares of riparian forest where beavers have reset succession



Inner buffer shows the area opened by beavers: 13.12 hectares of forest, 2.65 km of river

Aim 1: Assess nr hectares of riparian forest where beavers have reset succession



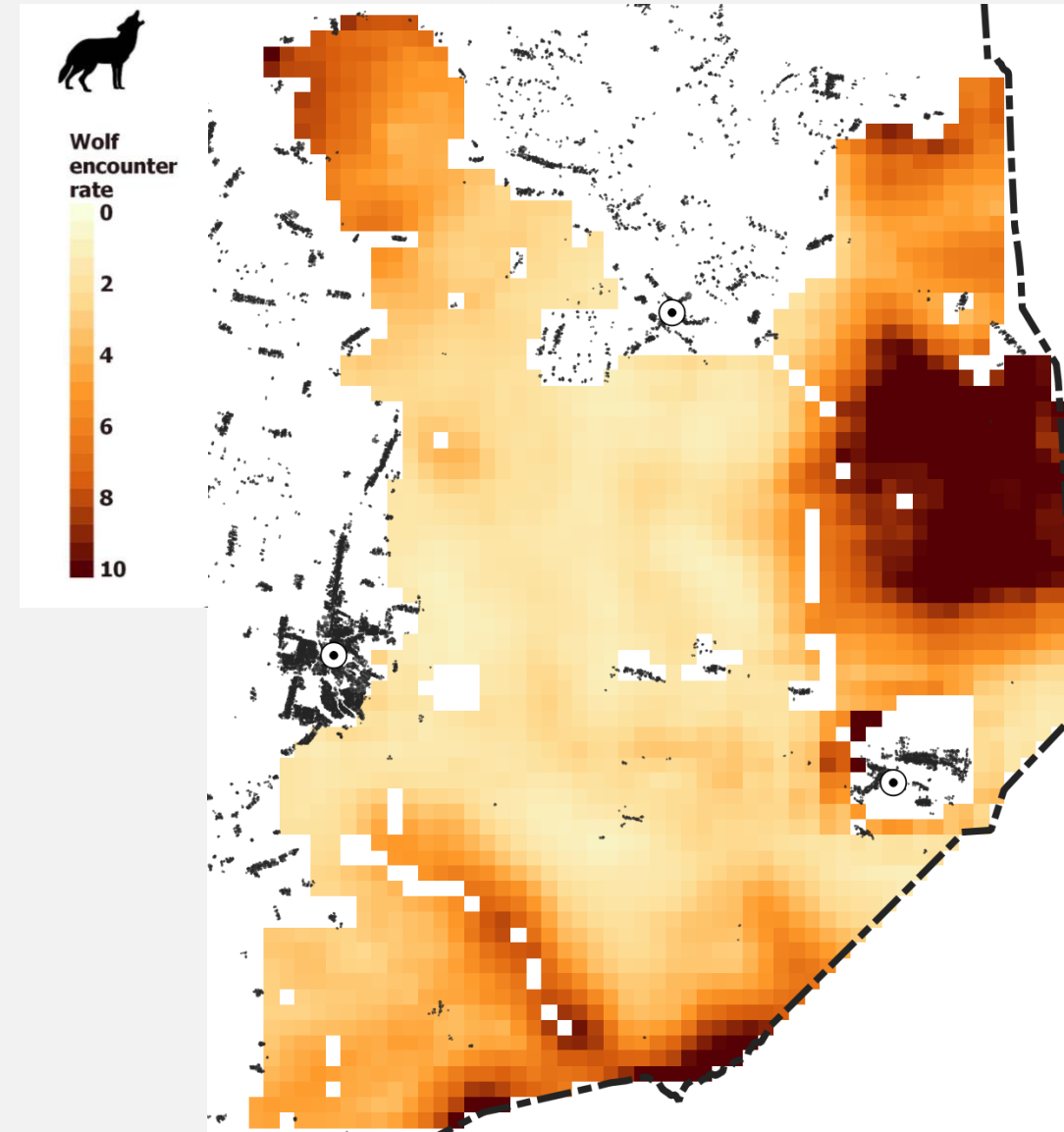
Aim 2 & 3: Do wolves shape beaver space use and impacts on forest composition and structure?

Landscape scale: Are beaver colonies less frequent in some areas due to wolves?

Home range scale: Do beavers alter foraging patterns depending on how often wolves visit?

Methods:

- Camera traps
- Vegetation surveys along transects
- 24 studied beaver colonies



Thank you for listening
tdiserens@ibs.bialowieza.com
Twitter/Instagram: @tomdiserens

